

日本北陆の旅 JAPAN HOKURIKU

东京 / 富士山 / 白川乡 / 高山 / 岐阜 / 京都 / 大阪 / 奈良 / 关西
Tokyo / Mount Fuji / Shirakawago / Takayama / Gifu / Kyoto / Osaka / Nara / Kansai

2024



特色安排

SPECIAL ARRANGEMENT

- 精心策划、贴心安排【不走回头路】系列
Meticulous Planned、Intimate Arrangement
【Smooth & Comfort】Series



行程特点 ITINERARY HIGHLIGHTS

- 富士山 Mount Fuji
- 东大寺 Todaiji
- 清水寺 Kiyomizu-Dera
- 白川乡合掌村 Shirakawago Gassho Village
- 奈良公园 Nara Park
- 浅草寺 Senso-Ji

* TICKET 含票 Include Ticket * 世界遗产目录 World Heritage Sites



膳食 MEALS

- 鳗鱼饭 Unadon
- 日式烧鱼 Japanese Grilled Fish
- 日式海鲜火锅 Seafood Nabe Set
- 日式烧烤自助餐 Japanese Barbecue Buffet
- 正宗日式拉面 Japanese Ramen



酒店特色 HOTEL HIGHLIGHTS

- 住宿当地4星级酒店 Stay At Local 4 Stars Hotel
- 保证1晚住宿温泉旅馆
Guaranteed Stay 1 Night At Hot Spring Resort

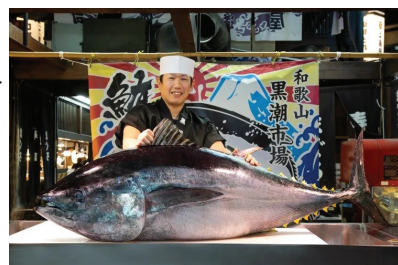


乐趣购物 FUN SHOPPING

- 银座 Ginza
- 阿美横町 Ameyoko Street
- 心斋桥 Shinsaibashi
- 临空城奥特莱斯 Rinku Premium Outlets

鲔鱼解体秀 Tuna-filleting Show

欣赏专业人员庖丁解牛般的片鱼技艺，享受整条新鲜捕捞的鲔鱼在专家手下分解成片的绝妙体验。Enjoy the rare experience of seeing an entire, freshly caught tuna expertly sliced and fileted as a professional explains the different cuts of Japan's most famous sushi fish.



视情况而定 / Depend Market Condition



飞机 Flight
往 Toward
地点 Destination
过夜 Overnight
注：以上的行程地图只供参考，如突发状况我们会保留更改行程的权利。
Remark: Route are subject to change based on any circumstances.

第1天 出境 ✈️ 中转城市 ✈️ 东京 机上用餐

集合于国际机场，乘搭国际航班飞往东京羽田国际机场。

第2天 东京 机上用餐/晚

阿美横町: 集中了海产类、干货等食品，以及服装、杂货、珠宝饰品等各行业店铺。

银座: 东京最具代表性的繁华商圈，汇集许多高档百货和百年老店。

第3天 东京 富士山 早午晚

浅草寺: 东京都内最古老及具有江户风格的寺庙。寺院的大门叫“雷门”，正式名称是“风雷神门”，是浅草的象征。

仲见世街道: 仲见世商店街是日本最古老的商店街之一，是从雷门通往浅草寺前广场的一条参拜道路。

富士山: 乘车前往日本第一高峰-富士山。如天气允许，巴士将开到富士山第五合目，以欣赏火山爆发后形成的大自然风景。

忍野八海村: 源于富士山融雪的八个小池，清澈见底景色自然精致。

第4天 富士山 白川乡 高山 岐阜 早午晚

白川乡合掌村: 被联合国教科文组织列为世界文化遗产，参观日本传统建筑珍宝，百多栋【合掌造】茅草屋顶的民家，造型非常特殊，营造出一种童话式的田野风情。而在冬季里，挤满白雪的尖顶小屋在雪地里静静地发光。仿佛是童话世界般梦幻的风景。

和田家: 参观最大规模及最古老的合掌造房，建于江户时代末期。

上三之町: 充满江户风情，漫步在保留有商人城镇风貌的街区，体验日本传统文化。

第5天 岐阜 京都 大阪 早午晚

清水寺: 京都最古老寺院，清水舞台仅靠榫木柱撑起，赏樱和赏枫胜地。

伏见稻荷大社: 稻荷神就是狐狸神，保佑五谷丰收，商业繁荣。

心斋桥购物街: 大阪最繁华的商圈，从高端大牌到平价小物，做一次彻底的购物狂。

第6天 大阪 奈良 关西 早午晚

大阪城(外观): 这座城堡是日本最著名的地标之一，它在十八世纪时期的日本统一时期发挥了重要作用。

奈良公园: 野生鹿儿的天堂，您有机会喂食鹿儿且近距离观察鹿儿生活。

东大寺: 南都七大寺之一，距今约有一千二百余年的历史。1998年作为“古都奈良的文化财”之一而被列为世界文化遗产。

临空城奥特莱斯: 日本最大、人气品牌最多的奥特莱斯，中心建筑充满了历史悠久的美国港口城市查尔斯顿的影子。

第7天 关西 ✈️ 中转城市 ✈️ 入境 早午/机上用餐

黑潮市场: 熙攘热闹的海鲜市场，提供新鲜捕捞的海产，值得一看之处在于每日举办的鲑鱼解剖秀。

送往机场乘搭客机飞返美丽的家园。
鸿运旅游期待与您再出发！

Day 1 Depart ✈️ Transit City ✈️ Tokyo MOB

Assemble at international airport, departure flight to Japan Haneda International Airport (Tokyo).

Day 2 Tokyo MOB/D

Ameyoko Street: Various products such as clothes, bags, cosmetics, fresh fish, dried food and spices are sold along Ameyoko.

Ginza: Tokyo's most famous upmarket shopping, dining and entertainment district, featuring numerous department stores, boutiques, art galleries, restaurants, night clubs and cafes.

Day 3 Tokyo 富士山 BLD

Senso-Ji: The oldest temple with Edo-style in Tokyo. The door of the monastery called "Lei Men", officially known as "Wind And Thunder God Door", as the symbolic of Asakusa.

Nakamise-Dori Street: One of the oldest shopping streets in Japan.

Mount Fuji: Japan's highest mountain. Japanese people believe that Mt Fuji is a sacred mountain firmly connected to God.

Oshino Hakkai Village: Consist of eight ponds and each ponds has its own special story.

Day 4 Mount Fuji 白川乡 高山 岐阜 BLD

Shirakawago Gassho Village: Nestled in a rural setting reminiscent of the old Japan, Shirakawago is world-famous for its steeply thatch-roofed or "Gassho-Zukuri" style traditional of the finest in craftsmanship.

Wada Hosuse: Visit to the largest and oldest of gassho-style house, it was built at the end of Edo Period.

Kamisan Machi: Takayama's old town has been beautifully preserved with many buildings and whole streets of houses dating from the Edo Period.

Day 5 Gifu 京都 大阪 BLD

Kiyomizu-Dera: One of the most celebrated temples of Japan. Best known for its wooden stage that juts out from its main hall.

Fushimi Inari Taisha: Inari god is the fox god, considered to bless the grain harvest, derived to commercial prosperity.

Shinsaibashi: The largest shopping area in Osaka where many boutiques and specialty shops are gathered.

Day 6 Osaka 奈良 关西 BLD

Osaka Castle (Exterior): The castle is one of Japan's most famous landmarks and it played a major role in the unification of Japan during the 16th century of the Azuchi-Momoyama period.

Nara Park: A large population of semi-wild deer you can buy deer crackers to feed them.

Todaiji: One of the powerful Seven Great Temples, about one thousand two hundred years of history. In 1998, it was listed as a world cultural heritage as one of the monuments of the ancient Nara.

Rinku Premium Outlets: The largest outlet shopping center in western Japan. A 2-story building in the style of the old American port town Charleston houses over 210 shops.

Day 7 Kansai ✈️ Transit City ✈️ Return BL/MOB

Kuroshio Market: A bustling seaside fish market offering freshly caught seafood. Don't miss out Tuna-filleting Shows.

End of journey, return flight to home.
iO Travel hope to serve you again soon !

20231228

出发日期 DEPARTURE DATE :

团费 TOUR FARE :

必须符合条款：

1. 本公司保留对行程内容因当地天气、路况、突发情况以及不可抗力因素，做出适当更改和调整的权力。
2. 所有航班如有更改，恕不另行通知。
3. 旅游细则与附带条件，以收据背项为准。
4. 自由活动期间的费用项目由客人自行选择与付费。
5. 如有包含门票，将特别注明。
6. 如有购物站，将特别注明。
7. 旅程以华语，粤语或英文讲解。
8. 每团至少16位成员才能铁定出发。如团体少于16为成员，本公司保留决定操作或取消此行程。
9. 所有酒店评级，均以当地为标准。如遇到当地酒店客满，不可预测等因素，将以同级酒店取代。
10. 房型是根据酒店分配，本公司不负责所分配房型差异。
11. 本公司建议购买旅游保险，为您的旅程做个保障。
12. 英文版本是翻译自中文版本，如有差异将以中文版为。

Terms & Conditions Apply :

- 1) iO reserves the right to make appropriate changes and adjustments of the itinerary due to local weather, road conditions, unexpected situations and irresistible factors without prior notice.
- 2) All flight are subject to change without prior notice.
- 3) All booking will be subjected to terms and conditions as stipulated in the official receipts.
- 4) Participation of optional tours will be at passengers own expense.
- 5) Admission and entrance ticket will be included where specified.
- 6) Shopping stops will be included where specified.

- 7) Tour is conducted in Chinese, Cantonese or English.
- 8) Minimum group size of 16 passenger is required for a confirmed departure. Group size of 15 and below will solely be at discretion of iO travel.
- 9) All hotel rating are based on local standard. In the event that accommodation if the stated hotel is unavailable, it will be replaced by hotel of similar standards.
- 10) Room types are based on run of house allocated by respective hotels. iO will not be responsible for the differences of the room allocated.
- 11) iO travel recommends you to buy travel insurance for your travel related coverage.
- 12) In the event if discrepancies between English and Chinese itinerary, please refer to Chinese Version.



iO TRAVEL



IPOH OVERLAND TOURS & TRAVEL SDN. BHD.

(173557-U) (KKP-1478) (KPL/LN 1478/2)

IPOH OFFICE:

+605 253 2766 / +6016 559 8766

NO. 19, JALAN SULTAN ABDUL JALIL,
30300 IPOH, PERAK, MALAYSIA.

